

Our Impact – 2020.

Thank you for supporting Guide Dogs Victoria to change the lives of Victorians living with low vision or blindness. Together, we achieved:

Our Clients



18,255 hours of Client service delivery including **4,540** hours for regional Clients.

8,573 lives positively impacted through our services. This includes Clients and their support networks.

3,093 Client programs delivered significant independence.

Our Dogs

8,391 dog training sessions held.

14 Companion Dogs.

232 working Guide Dogs in the community.

9 Breeding Dogs.

94 new pups welcomed into the world at our nursery, Cute HQ!

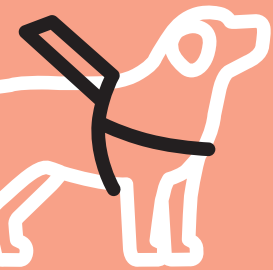
4 Post Traumatic Stress Disorder Dogs.

76 dogs matched with their new Handlers.

2 Pets-as-Therapy Dogs.

45 Guide Dogs.

2 Ambassador Dogs.



Our People

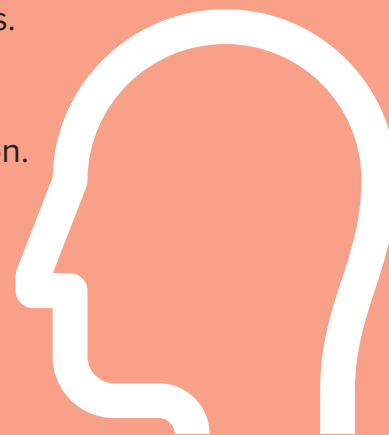
154 employees with 33% being employed for over 10 years.

607 volunteers.

86% employee satisfaction.

94% volunteer satisfaction.

1.5 million volunteer hours.



Our Impact – 2020.

About our services

Guide Dogs:

breeding, raising, training and support for Guide Dog users.

Early Childhood Services: New

working together with the child and their family to offer emotional and practical support from birth to six years of age.

Children's Mobility:

training in the home and school and camps for children and youth living with low vision or blindness.

Adult's Mobility:

enabling people to move safely and independently and to achieve their personal goals. This includes an Acquired Brain Injury Mobility service, offering training for Clients with vision loss caused by a brain injury.

Occupational Therapy:

practical strategies for daily living for people of all ages.

Low Vision Services:

Orthoptists who provide a range of techniques and equipment for people to maximise their functional vision.

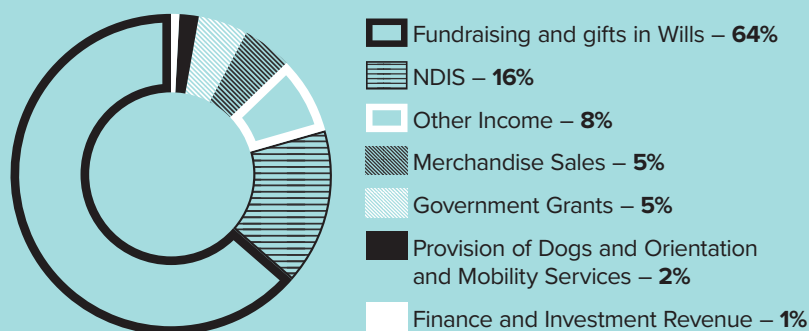
Assistive Technology:

specialising in teaching the use of equipment to maximise our Client's capacity to undertake daily activities independently.

Support Coordination:

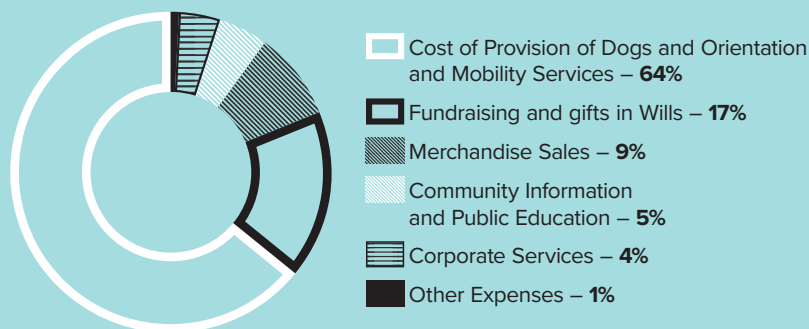
assisting Clients to enter the National Disability Insurance Scheme (NDIS) and supporting them to connect to services that enable them to achieve their individual goals.

Percentage of Income ex. capital*

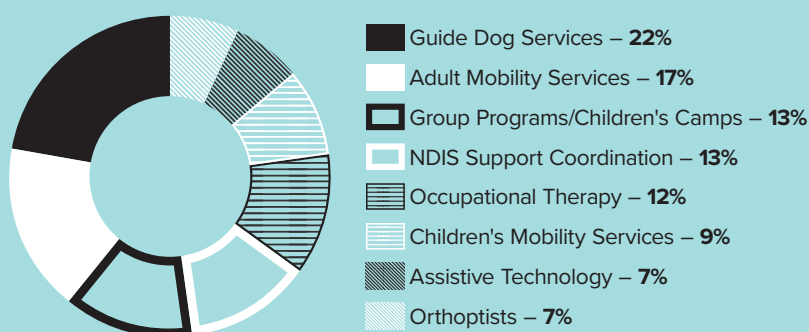


*excluding income towards the redevelopment of our Kew Campus

Percentage of Expenditure



Services Breakdown by Category



For more information visit:
guidedogsvictoria.com.au

Guide Dogs

2-6 Chandler Highway,
Kew VIC 3101

ABN 68 004 621 461